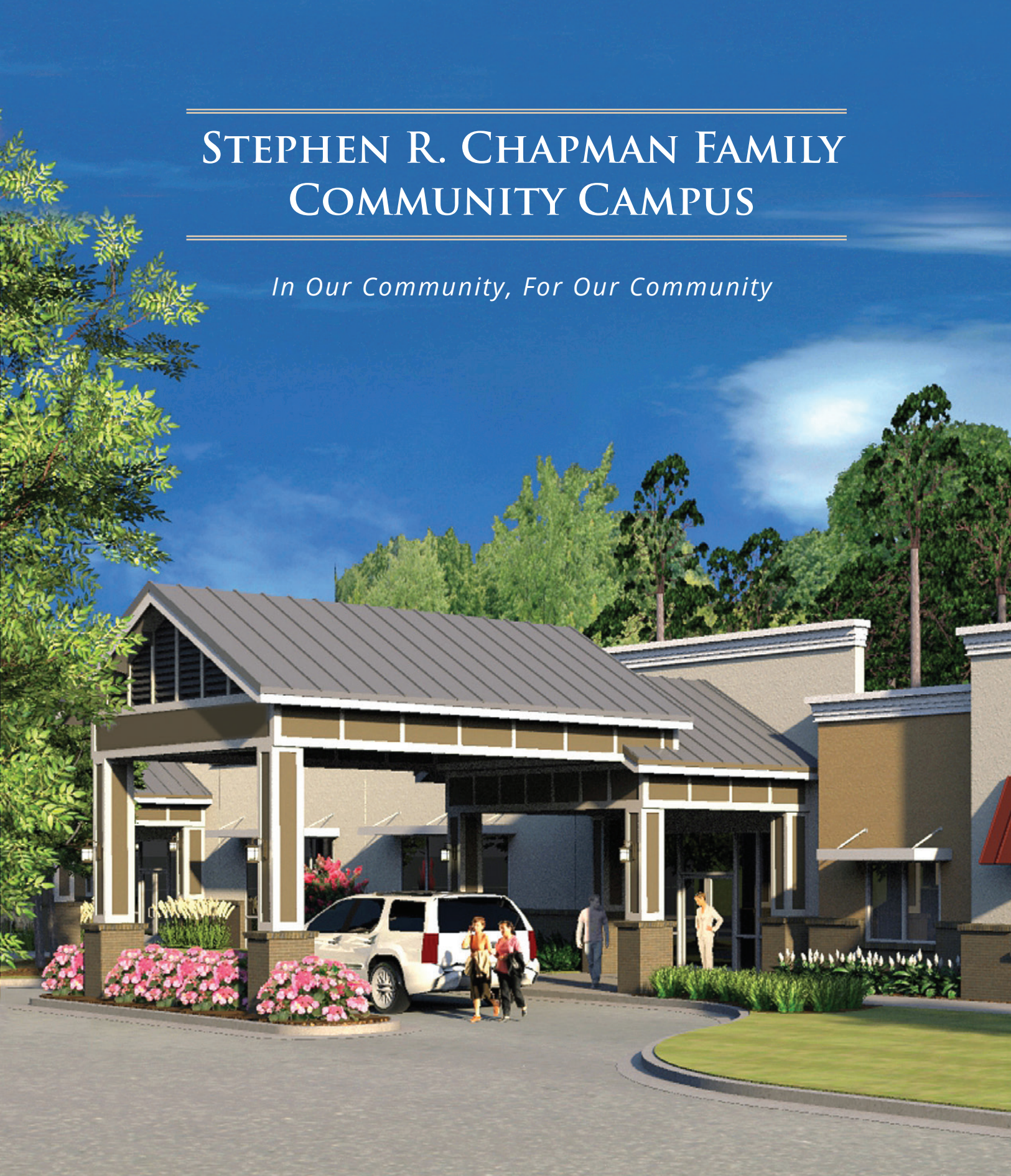


STEPHEN R. CHAPMAN FAMILY COMMUNITY CAMPUS

In Our Community, For Our Community



STEPHEN R. CHAPMAN FAMILY COMMUNITY CAMPUS RENDERING, OPENING 2018

My husband Steve and I, as well as our entire family, are honored to be involved with Community Hospice & Palliative Care, and to have the opportunity to change lives for the better with the Stephen R. Chapman Family Community Campus. The campus will provide much-needed education and coordination for local residents and their caregivers, which will empower people to make informed decisions about their own or their loved one's health care and better navigate the medical system of the future.

This appeals to everything that is most important to us—our love for our own family, our love for the community that has given us so much, our supportive employees who sustain us, and compassion and kindness for others that drives everything we do philanthropically.

In addition to compassion, this project fosters the other force for good that is undeniable—education. Knowledge is power. Today and certainly in our future, knowledge in relation to health care decision-making is not only helpful but necessary. Patients and their families will need access to information and professionals who can help them navigate an increasingly specialized health care system with



CHRISTINE AND STEVE CHAPMAN

Having knowledge, control and a say in your health care decisions at every point in your life is becoming more important than ever.

committed to making this access readily available to anyone in this county who needs it. The Stephen R. Chapman Family Community Campus will become a welcoming place for area residents to take classes, attend seminars, meet with support groups, volunteer and more.

Ten years ago, as the campaign was launched for our now beloved Bailey Family Center for Caring, the need for such a local resource resonated deeply with us because we made nightly round trips to visit our grandmother at the Earl B. Hadlow Center for Caring in Jacksonville. More recently, our family has been enriched by the Advanced Care Services Program, a newly launched collaborative effort between Community Hospice & Palliative Care and Flagler Hospital.

numerous caregivers and health care professionals. As our family believes that education should not be reserved as a privilege for just a few courageous enough to ask tough questions, we are

The care provided by this program has been an enormous relief. This program is just one of many that will operate at the new campus and be accessible to all.

Steve and I are proud to stand with Community Hospice & Palliative Care as Campaign Chairs, but we know it was God's hand that led us to this project. Having knowledge, control and a say in your health care decisions at every point in your life is becoming more important than ever. Our family is proud to lead the way to making that possible for everyone in our community with the Stephen R. Chapman Family Community Campus. Our hope is that all of you will step forward with us to help make this wonderful new campus a reality.

Christine M. Chapman
Stephen R. Chapman

Christine and Steve Chapman
Campaign Chairs

FROM *Our Community*

Jennifer MackInday is an Elizabeth Dole Fellow, award-winning author, national speaker, recipient of the President's Volunteer Service Award and a passionate advocate for the military and their caregivers. When her brother, Army Specialist James Smith was wounded by an IED blast, she became his caregiver.

...set the gold standard in caring for those who care for our veterans.

"Isolation was a huge challenge," she recalled. "I spent most of my time caring for my brother and little time caring for myself. Friendships, hobbies and interests all fell to the wayside."

A keynote speaker at Community Hospice & Palliative Care's annual military veteran caregiver conference, Jennifer shared the importance of caring for the unique needs of our veteran community and those who care for them. "Conferences that allow caregivers and veterans to come together in the same space to learn about support and resources available in the community are so

important. Community Hospice & Palliative Care has set the gold standard in caring for those who care for our veterans."

Dr. Barbara Ottaviani Jones and her husband moved to St. Augustine several years ago. Tragically, just one month after buying a home, her husband experienced a life-changing stroke. "My life became very difficult without an Advance Care Plan in place. Even though we were married, I did not have the right to make decisions for my own husband."

Care Plan in place for my husband, we wouldn't have had all the problems we faced and my relationship with his family would be much better."

My life became very difficult without an Advance Care Plan in place.

Barbara passionately believes in the value of Advance Care Planning. Through Community Hospice & Palliative Care's Honoring Choices initiative, she became a certified Advance

Care Planning facilitator and now helps others in her community prepare their care wishes in advance.

Her end-of-life wishes for her husband and those of his family were at odds. "With his family, we went in two different directions. We were not in agreement regarding his treatment."

"I do believe, I firmly believe, that if we had an Advance

Stephanie a caregiver for her husband, recently relocated from Hawaii to St. Augustine. Upon arriving in this new city, she became the sole caregiver for her 89-year-old mother in addition to caring for her husband.

have a person to talk to one-on-one," she said. "I've never experienced anything like this with other programs. It was a huge help."

I've never experienced anything like this with other programs. It was a huge help.

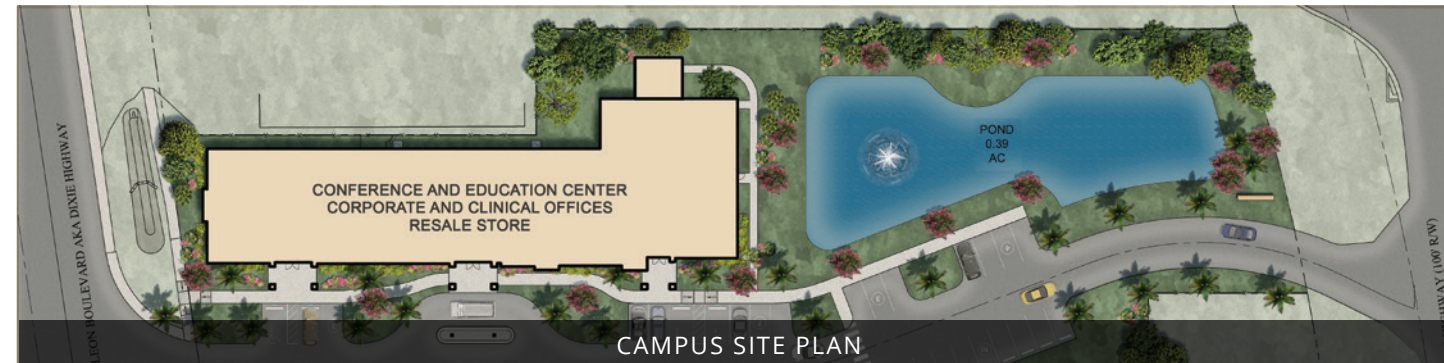
The role of providing care for two loved ones is never easy, but Stephanie has gotten much-needed help for the past six months from a Community Hospice & Palliative Care Caregiver Coach. "It's nice to

She said, "When mother came to live with us, she wasn't in the best physical condition, and it was more of a challenge than I expected." Today, her mother is living in an assisted living facility, is blossoming and has been overheard saying, "I like attention," with a twinkle in her eye.

These are a few illustrations of the life-changing programs and services that will be provided at the Stephen R. Chapman Family Community Campus. The campus will provide everything from Advance Care Planning to caregiver education, specialized veterans conferences, continuing education seminars and grief and bereavement counseling.

STEPHEN R. CHAPMAN FAMILY COMMUNITY CAMPUS

Conference and Education Center • Corporate and Clinical Offices • Resale Store



ABOUT THE CAMPUS

Community Hospice & Palliative Care has served the residents of St. Augustine and St. Johns County for more than 30 years. Our vision is to serve as the compassionate guide for end-of-life care in the communities we serve, providing care and support regardless of ability to pay. Philanthropic support makes this possible.

We have cared for more than 11,250 St. Augustine and St. Johns County residents, with most being able to remain in their homes while receiving care. We have also provided grief and bereavement counseling to more than 7,500 residents.

The new **Stephen R. Chapman Family Community Campus**, in the heart of St. Augustine, will strengthen our ability to serve the growing needs of this community and prepare for future opportunities by consolidating all services outside the acute-care environment of our Bailey Family Center for Caring.

This ambitious project will bring together on one central campus:

- * A **community conference and education center** (7,576 square feet) featuring four flexible conference rooms with 2,540 square feet of meeting space.
- * **Corporate and clinical offices and meeting space** for our St. Augustine-based teams, featuring private offices and open workstations with dedicated space for grief and bereavement counseling and workshops.
- * An **upscale resale store** (7,712 square feet), an important source of revenue that will consist of a large sales floor and donation drop-off area.

LOCATION

The site for the **Stephen R. Chapman Family Community Campus**:

- * Will create greater visibility for Community Hospice & Palliative Care and the important work we do.
- * Is prominently situated in the heart of St. Augustine near the Historic District, with easy access from U.S. 1/Dixie Highway.
- * Is located within a rapidly growing retail corridor only minutes from Target, The Home Depot, Publix and the recently opened commerce and entertainment complex, the St. Augustine Shipyards.

EDUCATION & RESOURCES

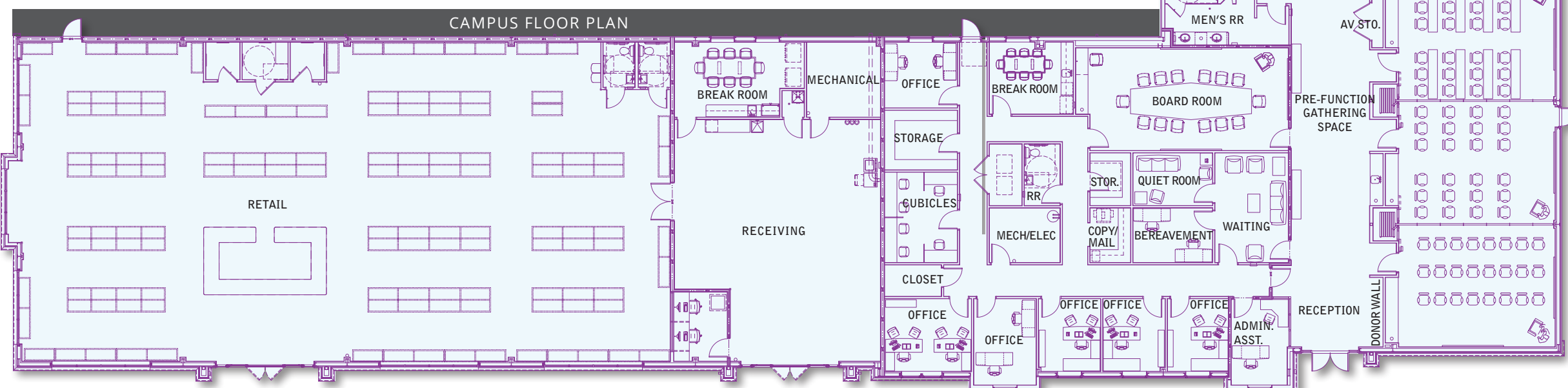
The **Stephen R. Chapman Family Community Campus** will serve as the focal point for Community Hospice & Palliative Care outreach and education initiatives, including:

- * Resources for advanced illness issues.
- * Workshops and other learning opportunities for caregivers, veterans, volunteers and other groups.
- * Community meetings and events open to local residents and organizations.
- * Meeting space for local partners and community groups.

MAKE A DIFFERENCE

- * Philanthropic support will be vital to establish this community resource.
- * Overall project costs are anticipated to be \$3 million with a working campaign goal of at least \$1.5 million.
- * Support of this project is a commitment to the community and this new local resource, which will serve the needs of area residents for years to come.

Naming Opportunities Available.



TO LEARN MORE

about how you can support our new community campus, please contact Donna Morrow, director of development, at **904.407.6136** or **dmorrow@communityhospice.com**

PROVIDING SUPPORT WHEN AND WHERE IT MATTERS MOST.



Community Hospice & Palliative Care has a long history of commitment to serving as our community's compassionate guide for support with advanced illness, caregiving, advance care planning and grief and loss. We recognize that to fulfill our mission, we must not only be an excellent provider of direct care to patients and families during the last stages of advanced illness but deliver services and education that change attitudes, increase awareness and improve the overall quality of life in the communities we serve.

We envision a more compassionate and informed community better able to provide support and caring to its neighbors, co-workers, friends, and fellow faith worshipers as they experience the stresses of caregiving, serious illness and grief and loss.

In our growing St. Augustine community, our ability to meet this commitment has been limited due to a lack of adequate and accessible space to accommodate the many programs and services we offer.

Our new Stephen R. Chapman Family Community Campus will provide that needed space. Most importantly, it will serve as the focal point for our community to interact with Community Hospice & Palliative Care for all activities that occur outside of the acute-care setting of our Bailey Family Center for Caring at Flagler Hospital.

We have an opportunity to take a significant leap forward..

Community Hospice & Palliative Care stands at a time of great opportunity, unbounded optimism, and infinite possibility. We have an opportunity to take a significant leap forward—not only with passion, but with purpose—to expand our local impact.

To achieve our goal, we are embarking on an ambitious fundraising campaign to raise at least \$1.5 million to establish this campus. I invite you to join us on this journey.

The positive impact made by this campus and the programs and services offered will allow us to better serve our local residents and provide resources to meet their needs. Your commitment to making this campaign a success will play a vital part in shaping the future of our community and will create a lasting difference and improve quality of life for all.

I look forward to working with you.

Susan Ponder-Stansel
President and Chief Executive Officer

STEPHEN R. CHAPMAN FAMILY COMMUNITY CAMPUS CAMPAIGN COMMITTEE

Christine and Steve Chapman
Campaign Chairs
Lauren Abell
Alecia and Mark Bailey
Katherine Batenhorst

Jason Brownell
Ron Dixon
Linda and Ray Matuza
Derek May
Linda Meehan

Mimi Moxon
Donna Spring
Sandy Upchurch
Erin Warrell

COMMUNITY HOSPICE & PALLIATIVE CARE ST. AUGUSTINE/ST. JOHNS COUNTY ADVISORY COUNCIL

Katherine Batenhorst,
Chair
Virginia Andrews, RN
Alecia Bailey
Kelly Barrera
Jane Boles
Daphne Cameron
Christine Chapman

Barbara Cone
Theresa Coomes, ARNP
Betty Crosby
Ronald Dixon, DMD,
FAGD, PA
Julie Vaill Gatlin
Karen Glenos
Skip Goodson

Ingrid Guier
Ray Hamel
Thomas Jackson
Robert H. Kaye
Christina Kostuk
Deltra Long
Almarene Lowndes
R. Joan Maguire

Linda Matuza
Bill Mignon
David Upchurch
Sandy Upchurch
Dr. Walter West
Susan Ponder-Stansel,
Ex-Officio
Jane M. Sims, *Honorary*



Serving St. Augustine & St. Johns County with Compassion

904.824.3735 • 800.274.6614 Toll-Free • **CommunityHospice.com**