



## Making Life Better ... Together

2016 Report to Our Community





**Our Mission:**

To improve the quality of life  
for patients and families, and  
to be the compassionate  
guide for end-of-life care  
in our community.

# Making Life Better ... Together

An Open Letter to Our Community:

*Caring* and *compassionate* are words often associated with Community Hospice of Northeast Florida, now known as Community Hospice & Palliative Care<sup>SM</sup>. While quite simple, these two words represent the fabric of who we are and so aptly describe the many generous, selfless individuals who have served this organization from its earliest beginnings until today. We are immensely grateful to our 950 employees, more than 1,000 volunteers and partners, and the thousands of donors who enable us to fulfill our mission to provide comfort and care to adults and children in need.

During 2016 our organization began an evolution to a new phase. That work has culminated in a change to our name and a new look for our organization through a refreshing of our brand. These are important steps that prepare us to serve communities to the west of our traditional service area, including Gainesville and Lake City. This future expansion is a result of being granted a Certificate of Need for these areas by the State of Florida in early 2017.

*Making Life Better...Together*, our 2016 report, shares but a few of the stories and accomplishments from our organization in 2016. This snapshot in time shares how we are improving the lives of individuals and families together through care, education and service.

As the only locally governed, mission-driven, nonprofit palliative and hospice care provider, we acknowledge and take seriously our obligation to not only understand the emerging health care needs of our community, but to respond to them. Thank you for playing such a significant role in this journey and enabling us to fulfill that responsibility.

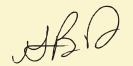
With appreciation,



Susan Ponder-Stansel  
President & CEO  
Community Hospice  
& Palliative Care



Fernando Acosta-Rua  
Chair, Community Hospice  
& Palliative Care  
Board of Directors



Ray Driver  
Chair, Community Hospice  
& Palliative Care Foundation<sup>SM</sup>  
Board of Directors

## 2016 By the Numbers (For the fiscal year ended Sept. 30, 2016)

### Caring

---

— **13,081** —  
patients cared for  
in Baker, Clay,  
Duval, Nassau and  
St. Johns counties

— **ONLY** —  
locally-based, nonprofit  
hospice provider in NE FL

— **413 families** —  
supported by  
Community PedsCare®

**LEVEL III Partner**  
We Honor Veterans

— **200** —  
on any given day there  
are approximately 200  
veterans in our care

— **More than 90%** —  
of patient families would  
recommend us to others

— **95% / 5%** —  
**95%** of care provided  
at patient's home

**5%** of care provided in our  
8 homelike inpatient centers

### Learning

---

— **245 trained** —  
Honoring Choices®  
Florida facilitators had  
advance care planning  
conversations with  
**1,737 individuals**

— **170** —  
advance care planning  
education sessions  
reached  
**5,835 people**

— **302 unique** —  
in-service programs  
delivered to area health  
care professionals

Community Hospice &  
Palliative Care hosted

**23 fellows  
& residents**  
rotating through key  
hospice disciplines for  
residency training

**4 Caregiver Conferences**  
**+ ONE CAREGIVER EXPO**  
**1,229 attendees**

**MyCaregiverConnection.org**  
24-7-365 online support for  
— **15,000 caregivers** —

### Serving

---

**974 VOLUNTEERS**  
**95,444 hours**  
**\$2.12 million**  
MONETARY EQUIVALENT

Volunteers fulfilled  
**92%** of our  
patient family requests

— **70 teens** —  
served on the  
Community PedsCare®  
Teen Advisory Board

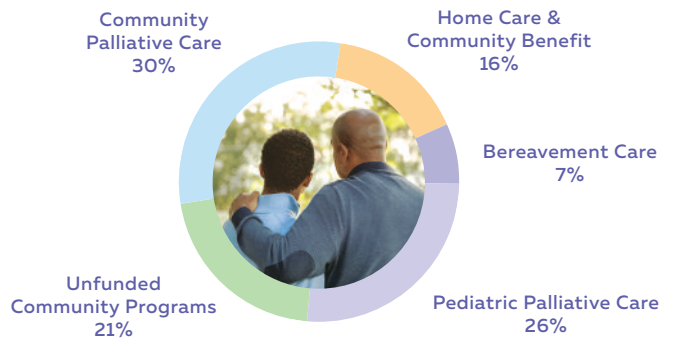
— **\$4.2 million** —  
raised to support  
Community PedsCare® at  
Halloween Doors & More  
since 2005

— **16,597** —  
community members  
found hope and healing  
through Community Grief &  
Bereavement services

— **45 children** —  
attended Camp Healing  
Powers® in 2016

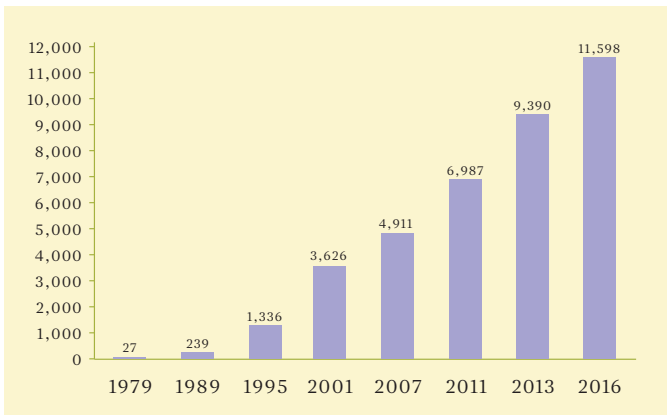
## Our Community Investment

Pediatric Palliative Care	\$ 1,451,060
Unfunded Community Programs	\$ 1,172,010
Community Palliative Care	\$ 1,674,300
Bereavement Care	\$ 390,671
Home Care & Community Benefit	\$ 892,960
<b>(For the fiscal year ended Sept. 30, 2016)</b>	<b>\$ 5,581,001</b>

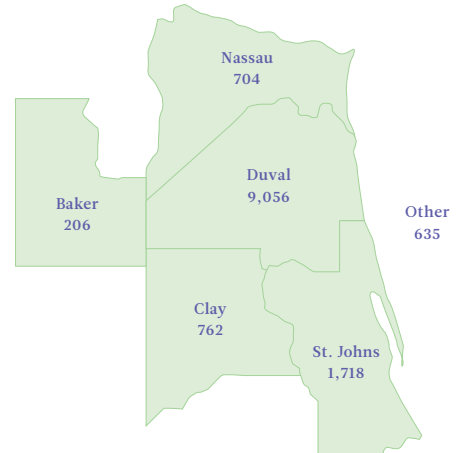


## 2016 Patient Statistics

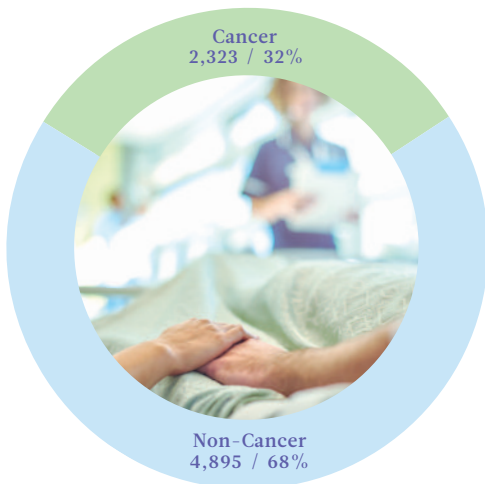
Patients Admitted



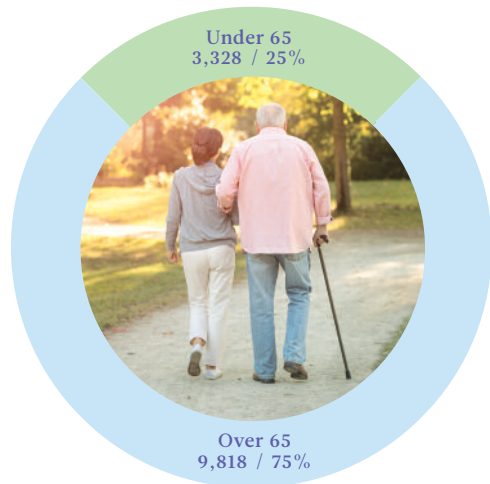
Patients Served by County (13,081 total)



Patients by Illness  
(Hospice patients only)



Patients by Age\*



All statistics are hospice and palliative care patients for Oct. 1, 2015 – Sept. 30, 2016 unless otherwise noted. \*Includes hospice, Community PedsCare® and PIC patients



## Caring...Together

### Providing a Range of Care For Advanced Illness

Community Hospice & Palliative Care served 13,081 adults and children across Baker, Clay, Duval, Nassau and St. Johns counties during 2016.

Our commitment to providing the right care at the right time resulted in the delivery of palliative and hospice care services to patients at home, in skilled nursing and long-term care facilities, alongside our hospital partners and in our eight inpatient care centers throughout Northeast Florida – including our newest Center for Caring at St. Vincent’s Medical Center Southside.

Our complete care team of physicians, advanced registered nurse practitioners (ARNPs), pharmacists, nurses, nursing assistants and aides; psychosocial counselors; chaplains; volunteers; therapists and technicians, worked together to meet the physical, emotional, spiritual and social needs of our patients, their families and other loved ones.



In 2017, we will further our commitment to innovative, advanced care services with the aid of a **\$300,000 grant from Florida Blue Foundation**. Through these funds, and in collaboration with Flagler Hospital in St. Augustine, we will be able to provide care management services for 400 underserved patients who are not yet eligible for hospice.

**More than 90%**  
of patient families would  
recommend us to others



WE HONOR VETERANS

### Honoring Veterans in Our Care and Our Community

Community Hospice & Palliative Care was recently recognized as a “Level III Partner” by the We Honor Veterans program sponsored by the U.S. Department of Veterans Affairs (VA) and the National Hospice & Palliative Care Organization. This means we have deepened our commitment to provide veteran-specific caring techniques; assist veterans with questions

about VA benefits and other veteran services; match veterans in our care with volunteers who are veterans; and partner with other veterans organizations throughout our community.

A special thank you to our partners at the Jacksonville Jaguars Foundation and City of Jacksonville's Veterans Resource and Reintegration Center for providing funding for the flags and pins presented to our veteran patients to honor their service.



## Our Care Teams Anticipate Every Need

Francis S. – known as “Dutch” to family and friends – is a World War II veteran and a survivor of the attack on Pearl Harbor. Now battling age and illness, he was referred by his physician to Community Hospice & Palliative Care.

“We had heard of Community through friends and neighbors,” says his wife, Barbara. “But we had never experienced them.”

At first, Dutch received hospice care at home.

“They were wonderful,” says Barbara. “Community delivered everything we needed. They sent and set up a hospital bed and linens; a high-back wheelchair; stationary and portable oxygen; and health and personal supplies. They even brought us a plaque commemorating his military service.”

Community’s service didn’t stop with material goods, however.

“At first we had a Community nurse once a week. When Dutch needed more care, we had the nurse or a private-pay home health aide 12 hours a day. Although I personally have a great support system, a social worker visited to see if I needed any resources or services. Physical and occupational therapists came out to assess and help Dutch. The chaplain paid a visit and even sang a beautiful rendition of ‘Ave Maria’ for us.”

On two occasions, Dutch stayed at Community Hospice & Palliative Care’s Earl B. Hadlow Center for Caring as part of a respite program, so Barbara could have a break from her caregiver duties. Dutch was later transferred from home to the Hadlow Center so he could receive more comprehensive care.

“Community Hospice & Palliative Care has been a real comfort,” says Barbara. “They are such loving and caring people.”

*“I say, ‘Thank you, Lord’ for Community Hospice & Palliative Care. They have been a godsend. I don’t know how they have managed to get so many loving and caring people in one place.”*

– Barbara S.

## Learning... Together

### Educational Outreach Programs to Serve Residents and Health Providers

Community Hospice & Palliative Care provides a number of programs that serve the needs of our community and prepare people for a time in their lives where they are managing an advanced illness.

Honoring Choices® Florida (HCFL) is the community-wide advance care planning (ACP) program coordinated by Community Hospice & Palliative Care. Its goal is to provide opportunities for individuals to have a guided conversation about their wishes if faced with a serious or life-limiting illness and to help them document those wishes. Nearly 250 trained facilitators engaged 1,737 individuals in ACP conversations in 2016 at sites including senior and faith-based organizations. Staff also conducted 170 educational programs, reaching 5,835 people.



Effective Jan. 1, 2016, physicians were able to bill Medicare and Medicaid for conducting ACP conversations. A focus area of HCFL work during 2016 was assisting physicians and their office staff in developing ACP as a routine aspect of the annual wellness visit.

**1,737 individuals had**  
advance care planning conversations  
with **245 trained facilitators**



### Charles M. Neviaser Educational Institute

The Charles M. Neviaser Educational Institute serves as a focal point for Community Hospice & Palliative Care's community outreach and education initiatives. Services provided at the Institute include:

- Advance care planning
- Caregiver support and coaching
- Individual and group grief and bereavement counseling
- Health fairs and educational presentations
- Training for clinical professionals, including physicians, nurses and nursing assistants
- Training for community volunteers and employees
- Conference space for community meetings and events



In 2016, the **Hospice Foundation of America** selected Community Hospice & Palliative Care to promote advance care planning (ACP) in the region by sponsoring viewings of "Being Mortal," a Frontline documentary, and engaging community discussion about the importance of ACP.



## Advance Care Planning & Peace of Mind

"My mother lived up in Virginia and was very ill. The doctors said she was dying and recommended hospice. I brought her back to Florida with me and our doctor contacted Community Hospice & Palliative Care. I didn't even know what hospice meant, but I was so impressed with Community. I got all the equipment I needed, and people came out two or three times a week. They were so helpful.

They talked to my mother about her advance care options and wishes. They were very attentive and really listened to what she wanted and needed. I listened and they asked for my opinion here and there, but it was all her thoughts and ideas. It was very informative and interesting to me. Soon afterward my mother suffered a stroke and could not speak. To know that her wishes had been documented beforehand was a real load off my shoulders.

Later, after she passed, my husband and I realized that we should document our choices and wishes. We talked with an Honoring Choices® Florida facilitator through the Baptist AgeWell Center for Senior Health. They walked us through the advance care planning process and put us at ease with the conversation. My daughter was very happy we did it. We now have signed copies with our doctor, our children and in our safety deposit box. I have more peace of mind because we went through the process. These things need to be taken care of before something happens."

*"Our family came together with advance care planning. After my mother, we went through the process and our daughter joined us and went through it, too. We then talked to our sons who live out of town to encourage them, as well."*

— Faye R.

## Specialized Education for Community Health Providers



Community Hospice & Palliative Care presented 302 unique continuing education in-services during 2016. These unique and specialized education programs were delivered to community health care providers, medical residents and staff at hospitals, skilled nursing and assisted living facilities, physician practices, allied health professional groups and insurance companies.

The Community Hospice & Palliative Care Medical Services department hosted 23 fellows/residents from Navy Family Medical, UF Health Internal Medicine, St. Vincent's Family Practice and Mayo Clinic Florida to rotate through key hospice disciplines as part of their residency training.

Community also supported two fellows with the University of Florida College of Medicine-Jacksonville through a collaborative fellowship in pediatric and adult hospice and palliative medicine.

---

## Caregiver Coalition Programs Creating Confident Caregivers

The Caregiver Coalition of Northeast Florida, a program of Community Hospice & Palliative Care, provides programs and services to support the more than 15,000 family caregivers across Baker, Clay, Duval, Nassau and St. Johns counties.

During 2016, the Coalition hosted four "Caring for the Caregiver" conferences with a total attendance of 457; the fifth annual "Caregiver Expo" – a daylong event with health screenings, fun activities and inspirational talks by leading caregiving experts; and distributed five issues of *Caregiver Connections* with practical tips and news about community events to support caregivers.

In addition to year-round events and support, MyCaregiverConnection.org offers 24/7 online support and resources caregivers need to better care for themselves and their loved ones.



**772 caregivers**  
attended the Fifth Annual  
**Caregiver Expo**

Thank you to our Caregiver Coalition partners: AARP, Aging True, Mayo Clinic Florida, ElderSource, Alzheimer’s Association, City of Jacksonville Senior Services Division, Baptist AgeWell Center for Senior Health, Brooks Rehabilitation, the Councils on Aging in Clay, Nassau and St. Johns counties, YMCA of Florida’s First Coast and Jewish Family & Community Services.



## A Wealth of Resources & Support for the Caregiver

Fred H. relates how more than four years ago his wife Sandi began having memory issues. According to Fred, she was forgetting little things at home.

“Then one day she called me from the car,” says Fred. “Although she was near home, she said she was lost and didn’t know where she was. We had to find out what was wrong. A neurologist said she had ‘mild cognitive impairment,’ but it was the tip of the iceberg. She was eventually diagnosed as having Alzheimer’s and dementia.”

Fred reached out to Toula Wootan, director of community programs at Community Hospice & Palliative Care. Toula referred Fred to Aging True Community Senior Services and ElderSource, both members of the Caregiver Coalition of Northeast Florida, a program of Community Hospice & Palliative Care. Aging True services include care coordination, home health care and caregiver support, while ElderSource provides information, referral assistance and answers on all aging issues.

“I cared for Sandi for four years before she passed,” says Fred. “It was a very difficult time. Toula’s support was so helpful. One referral was to a company that took care of the mountain of Medicaid paperwork. Our application went through the first time.”

Sandi spent her final weeks at one of Community Hospice & Palliative Care’s inpatient centers. “I was so thankful that God allowed me to be her caregiver when I could,” says Fred. “I was able to be there for Sandi, due in part to the resources and advocacy available for patients and families through the Caregiver Coalition.”

*“After Sandi passed away, for the next year I used both the support groups and individual grief counseling provided by Community Hospice & Palliative Care. It helped me and made me feel better about the things I was doing to cope. I’m forever grateful for all Community has done to help.”*

– Fred H.



## Serving...Together

### Volunteers Help Us Fulfill Our Mission

Volunteers are a life-blood for Community Hospice & Palliative Care and critical to our ability to fulfill our mission. In 2016, 974 volunteers provided integral services in areas as varied as patient care, administrative support, Thrift Shop, Pet Peace of Mind® and bereavement.

The ages and experiences of our volunteers vary as well – from 15 to 94 years old. Each individual has valuable abilities they contribute to fulfilling our mission. They are also supported with basic and area-specific training. These dedicated individuals provided a total of 94,544 hours in 2016 – a monetary equivalent of more than \$2 million.

In all, volunteers were able to fulfill 92 percent of all family requests – a key measurement in ensuring a quality experience for patients and families.



**\$5,000+** raised by 70  
Teen Advisory Board members  
to benefit Community PedsCare®



### Bereavement and Community Grief Help Our Community Heal

Community Hospice & Palliative Care grief and bereavement services helped nearly 16,600 community members cope with the loss of their loved one in 2016. These services are available, free of charge, to any member of our community who has experienced a loss within 13 months, and include:

- Private counseling
- Anticipatory grief counseling
- Understanding Grief workshops
- Camp Healing Powers®
- Grief Relief: A Family Experience
- Hope for the Holidays workshops
- 8-week therapeutic support groups
- Tree of Life and Candlelight Service of Remembrance

Since 2005, Halloween Doors & More, our signature benefit event for Community PedsCare<sup>®</sup>, has raised more than \$4.2 million to support vital pediatric care in our community. In 2016, 1,800 guests, volunteers and Community PedsCare patients and their families enjoyed our “gala of a different sort.”



## Young Leaders Bring Joy to Community PedsCare<sup>®</sup> Children

Megan is a graduating senior at The Bolles School and is currently the president of the Community PedsCare<sup>®</sup> Teen Advisory Board, a youth organization whose purpose is to fund, plan, organize and help present the annual Diamond D Ranch event for our Community PedsCare children and their families. Megan has served on the Teen Advisory Board since seventh grade.

“I first volunteered at Halloween Doors & More (the Halloween gala that builds financial support and raises awareness of Community PedsCare) and saw all the happiness at that event. That’s what drew me to the Teen Advisory Board,” says Megan.

The Diamond D Ranch is a working horse and cattle ranch covering more than 500 acres. The Teen Advisory Board/Community PedsCare event offers a fun-filled day of food, games, rides, music and a petting zoo.

“The whole Board meets once a month, with subgroup meetings for things like decorations, food and games,” says Megan. “Our activities are geared toward raising money. For example, we held our ‘Suds-n-Shred’ as a spring cleaning fundraiser. Participants could get their cars washed while having old documents securely shredded.”

Megan says she has been honored to be the Board’s president this year, which had grown to 70 members during her tenure. After six years of dedicated involvement with the Board and Community PedsCare, Megan will attend the University of Alabama in the fall, and she plans to study nursing.

“It was my involvement with Community PedsCare that fueled my interest in nursing.”

*“One year at Halloween Doors & More I dressed up as Cinderella. The look of joy on the faces of the children as they came up to me was magical. That is one of my strongest memories of helping at Community Hospice. It was incredibly fulfilling.”*

– Megan, President, Community PedsCare<sup>®</sup> Teen Advisory Board



## Pet Therapy: Our Furry, Four-Legged Volunteers

For 10 years, certified pet therapy teams have played an integral role on the Community Hospice & Palliative Care team. Pet therapy provides benefits to patients and families such as reduced stress, increased sensory stimulation and relief from pain. Community Hospice & Palliative Care provides free training and certification for pet therapy animals and their owners. Forty-five active pet therapy teams serve our patients at home, in hospitals, at our inpatient centers, and in assisted living and skilled nursing centers.

### Patients Find Peace & Comfort Through Pet Therapy

Ken K. helped care for his mother-in-law who battled Alzheimer's disease. Whenever Ken brought his dog Bailey along, it became clear that his mother-in-law bonded with the terrier; the dog comforted her. People recommended that Ken train Bailey as a pet therapy dog. Researching the topic, Ken found free training for owners and pets through Community Hospice & Palliative Care. Today, Ken, Bailey and Daisy (a mixed-breed dog Ken rescued) have provided pet therapy for hospice patients for more than seven years.

Ken sees hospice patients at different locations up to four days a week. "In one instance, I visited an elderly hospice patient, and her two grown children were there," says Ken. "They were all glad to see Daisy. It got them talking about a beagle they had when the kids were young. The mother and kids were trading stories about the dog, laughing and reminiscing. Daisy went on the bed and laid very still at the woman's feet. During the conversation the mother passed away, very quietly and serenely. It took us a moment to realize what had happened. Later the children told me they were so glad we had been there – that their mother passed while telling and listening to stories she loved. I like to feel that we made the transition easier for everyone."

*"I probably would have been happy to sit around after retiring, but volunteering with Community has kept me involved and engaged in the world of real people. I have learned the difference between sympathy and compassion and it has left a permanent desire within me to help people."*

– Ken K., Pet Therapy Volunteer



## Giving... Together

We are thankful to the individuals and organizations below that have supported Community Hospice & Palliative Care at the Guardians of Light level (*gifts of \$1,000 or more annually*). These contributions support Community Hospice & Palliative Care in continuing our mission to improve the quality of life for our patients and their families. In appreciation, we recognize and honor our Guardians of Light donors who made gifts between January 1, 2016 and December 31, 2016.

### Guardians of Light

#### \$1 Million+ (*Lifetime Giving*)

The Acosta-Rua Family Foundation  
Amelia Island Concours d'Elegance Foundation, Inc.  
Mr. and Mrs. Mark F. Bailey, Sr.  
The Donald C. McGraw Foundation, Inc.  
The Neviaser Charitable Foundation, Inc.  
The Petway Family Foundation, Inc.  
Theodore F. Weber Trust

#### Beacon (*\$100,000+*)

Far East Brokers and Consultants, Inc.  
Estate of Ursula B. O'Connor

#### Torch (*\$25,000 - \$99,999*)

Mr. Jeffrey M. Arey  
Mr. and Mrs. Charles W. Arnold III  
J. B. Coxwell Contracting, Inc.  
Mr. and Mrs. James Drvostep  
EverBank  
Estate of William J. O'Connor  
Florida Blue Foundation  
PGA TOUR, Inc.  
Riverside Rotary Foundation  
THE PLAYERS Championship  
Mr. and Mrs. Edward W. White, Jr.  
R. Halsey and Lisha S. Wise Family Fund

#### Flame (*\$10,000 - \$24,999*)

AARP, Inc.  
George M. Baldwin Foundation  
Mary and Bruce Bower  
Deerwood Gives Back, Inc.  
Dignity Memorial Hardage-Giddens Funeral Homes  
DuBow Family Foundation, Inc.  
The Alfred I. duPont Foundation, Inc.  
Nancy and Niall Falloon  
Jacksonville Jaguars Foundation  
The Thomas M. and Irene B. Kirbo Charitable Foundation  
Gasper and Irene Lazzara Charitable Foundation  
The Pineapple Corporation  
PRI Productions, Inc.  
Fred and Nancy Robbins  
Ms. Katherine J. Shelton  
Harold K. Smith Charitable Fund  
St. Augustine Center for Living  
Linda and David Stein  
Stellar Foundation  
Carl S. Swisher Foundation, Inc.  
Delores Barr Weaver and J. Wayne Weaver Web.com  
Edna Sproull Williams Foundation

#### Beam (*\$5,000 - \$9,999*)

Deb and Bob Bailey  
Robert and Nancy Baker  
Ball Family Fund  
Baptist Health AgeWell Institute for Senior Health  
Berg and Associates, P.A.  
Berman Family Foundation, Inc.  
Best Logistics Group  
Brooks Rehabilitation  
Mr. John A. Cleary  
Comfort Keepers  
CSX Transportation, Inc.  
Deerwood Rotary Charities, Inc.  
Jack and Betty Demetree Family Foundation  
Derma Sciences, Inc.  
Driver, McAfee, Peek & Hawthorne, P.L.  
Mr. and Mrs. George Dunn  
Fidelity National Financial, Inc.  
Flagler Hospital  
Tabitha and Jim Furry  
Mrs. Susan Garner  
Mr. Kevin T. Gay  
Senator Audrey Gibson  
Alan and Pam Green Family Foundation  
Juanita Gregg Foundation, Inc.  
Mrs. Joanne Hatcher  
Fanny Landwirth Foundation, Inc.  
Liberty Ambulance Service  
Mr. Davis MacRae  
The Main Street America Group  
Merrill Lynch  
Nemours Children's Specialty Care  
Parrot Heads in Natural Settings, Inc.  
Plasser American Corporation  
Polivka International  
Selevan Family Foundation, Inc.  
S. Irving and Anne Nevard Sherr Foundation Inc.  
St. Augustine Elks Lodge #829  
STV Engineers Architects Planners  
Sharon Tanner  
Mrs. C. Herman Terry  
Mr. R. Heinz Tschacher  
University of Florida Department of Pediatrics Jacksonville  
Mr. and Mrs. Kenneth Vontz  
Mr. and Mrs. Craig C. Walker  
Wells Fargo Foundation  
Bruce and Sharon Witten

#### Flare (*\$2,500 - \$4,999*)

Apex Home Healthcare Services  
Auld & White Constructors, LLC  
The Bailey Group  
Dr. and Mrs. Todd J. Batenhorst  
BBVA Compass  
Bozard Ford Company

Angelo and Olivia Cavallaro Advised Fund  
Mr. and Mrs. Stephen R. Chapman  
Christ Episcopal Church  
The Community Nutcracker, Inc.  
Mr. and Mrs. James E. Creamer, Jr.  
Cypress Mart of Cypress Village  
Cypress Village Christian Worship  
Ben and Diana Davis  
Dr. Robert W. Elkins and Ms. Roberta H. Kaye  
The W. W. & Eloise D. Gay Foundation  
Vicki-Lynne Gloger and Rod Hindman  
Gresham, Smith and Partners  
Grove Medical  
Home Instead, Inc.  
Humana  
Ms. Denise D. Hunt  
Brady S. Johnston Perpetual Charitable Trust  
Mr. and Mrs. Nikolaos Kavalieros  
Mrs. Gene H. Lewis  
Mr. John W. Logue  
Mr. and Mrs. M. Raymond Matuza  
Mayo Clinic of Jacksonville  
Medtronic  
Mr. and Mrs. W. Andrew Mims  
The Marion W. Minton & Walter J. Minton Foundation, Inc.  
Mr. and Mrs. Anthony V. Montalto  
Mr. and Mrs. Ricardo Morales, Jr.  
Mr. Lawton F. Morris, Jr.  
North Florida Bass Masters  
Olde Carriage Realty, Inc.  
Mr. and Mrs. Michael Orenchuk  
Mr. Grady C. Parker  
Ronnie and Jerrold Rosenbaum Family Foundation, Inc.  
Senior Counsel, Attorneys at Law  
Smiles by Glens  
Southeast Aero  
Specialty Freight & Courier  
St. Vincent's HealthCare  
Sunshine Health  
Mrs. Carrie C. Touchton  
The Trager Family  
Ruth and Tim Ware  
Ms. Linda Watkins  
WellCare Health Plans  
Calvin and MaryJo Wollitz, and Tommy and Ruth Spencer  
Y Yoga, Inc.

#### Spark (*\$1,000 - \$2,499*)

A-B Distributors, Inc.  
Acosta Sales and Marketing Company  
Mr. James L. Ade  
Alexander Law Firm  
AmVets Post 45

Mrs. Jo Ellen Andrews and the Andrews Family  
Bruce and Mary Anderson  
Mr. Kenneth G. Anderson, Sr.  
Arlington Lions Club  
Ms. Marcian S. Ashby  
Gail Backfisch and Stephen Coleman  
Mrs. Julie P. Baumer  
Mrs. Joanne R. Bernard  
Stephen and Beverly Berry  
Mr. and Mrs. William D. Bickford  
Mr. Arthur V. Bierlein  
The Stanley Blaxton Foundation Inc.  
Gerald and Susan Bott  
Mr. Michael Boulineau  
Mr. and Mrs. Christopher P. Boyd  
Mr. and Mrs. John E. Brink  
Brookdale Senior Living, Inc.  
Capt. Charles M. Brune, U.S.N. (Ret.)  
Carl and Phyllis Bunge  
Ben and Dot Butler  
Mr. Steve Buzash, Jr.  
CAA Sports  
Mr. Scott S. Cairns  
Mr. and Mrs. Jerry Cameron  
Mr. and Mrs. Andrew M. Cantor  
Capt. James J. Cardosi, U.S.N. (Ret.)  
Mr. and Mrs. Allen J. Carrel  
Mrs. Helen I. Cessna  
Mr. and Mrs. Charles L. Cheatham  
James and Sheri Cheek  
Nancy and Michael Cholakian  
Church Brothers, LLC  
Citigroup  
Mr. and Mrs. Joe Clairmont  
Coastal  
The Ronald Cohen Endowment Fund  
Mr. and Mrs. Anthony M. Colaluca, Jr.  
Mrs. Barbara H. Cone  
Mr. and Mrs. Brad Cooper  
Mrs. Alice M. Coughlin  
Tom and Judy Coughlin  
Dr. and Mrs. Robert R. Cowie  
Mrs. Virginia M. Cox  
Craig Funeral Home, Inc.  
Bobby Cudd and The Cudd Family  
Dr. Lydia R. Daniel  
The Harvey & Lois Dann Foundation, Inc.  
Ms. Amy R. Davis  
Stephen and Suzanne Day  
Mr. and Mrs. Bernard de Raad  
Destination Hope, Inc.  
Dr. Ronald L. Dixon  
Tom and Jean Dodson  
Dr. and Mrs. George H. Dorion  
Estate of Kate B. Doster  
Greg and Debbie Driskell  
Michael S. Drucker, MD & Brian Drucker  
Tim and Lorraine Dugan  
Mr. and Mrs. Edward A. Dulik  
Mr. John Duncan  
Deanne Dunlop Photography  
Eagle Harbor Golf Association  
Margaret Ann Edmiston  
Mr. and Mrs. Christopher F. Emans  
Mrs. Mary F. Erickson  
John and Annie Erstling

Mrs. Tracey L. Sherman-Falcon and  
Mr. Gandi A. Falcon  
Gianrico and Geraldine Farrugia  
Mr. John C. Featherston  
Mrs. Betty S. Fipp  
First Coast Senior Advisors, Inc.  
Florida Tackle & Gun Club  
Mr. Samuel J. Foley, Jr.  
Don and Rose Fraipont  
Nathan and Linda Franzblau  
Mr. Karl Frisch  
Mr. and Mrs. Benjamin P. Frisch  
Mr. and Mrs. Mark Frisch  
Mr. and Mrs. W. Garry Fussell  
Mr. and Mrs. James R. Gabrielsen, Jr.  
Richard and Donna Garro Family Trust  
Gemini Warehouse, Inc.  
Roy and Ruby Gilbert; Paul and JoAnne Gilbert;  
Neil Gilbert; Nancy and Tony LaJoie; Linda and  
Frank Culmone  
Larry and Phyllis Goldberg  
John and Gayle Graddy  
Mrs. Barbara D. Graham  
Dr. and Mrs. Lloyd E. Granat  
Mrs. Frances Granlund  
Mr. Barry Grinter  
Dr. Patrick Hale and Sue Hale  
Ms. Jean D. Harnage  
Mr. and Mrs. William R. Hatchett IV  
Healogics  
Ms. Donna L. Helvey  
Mr. and Mrs. John G. Higbe  
Mr. Harold S. Hinckley, Jr.  
Holland & Knight LLP  
Mr. and Mrs. Robert V. Hollis  
Deacon Marsha Evans Holmes  
Ken and Paula Horn  
Mr. and Mrs. John R. Horne  
Jack Wilson Chevrolet - Buick - GMC  
Mrs. June A. Jansa  
JEA  
Mr. Roger R. Johnson  
Mr. Lewis W. Johns, Jr.  
Ms. Harriett R. Jones  
Mrs. Jane Jordan  
Dr. Warren E. Keene  
Louise Shumpert Keen  
Mr. and Mrs. Vanice H. Keene, Jr.  
Mrs. G. Ponce Kehoe  
Ms. Michelle Key  
Mrs. Anne Kiem  
Mr. and Mrs. Anthony J. Kippes  
Ron and Cheryl Koehler  
Ms. Barbara A. Kopf  
Capt. Martin S. Kosiek, U.S.N. (Ret.)  
Paul and Denise Kotos  
Mrs. Barbara Kuehn  
Ms. Constance A. Kuncicky  
Dr. and Mrs. H. Ronald Levin  
Mr. and Mrs. John D. Logue  
Dan and Linda Mahoney  
The Mailey Family  
Dr. and Mrs. Kadir Mansur  
Ms. Jennifer L. Martin  
Mrs. Karen B. Mastroianni  
Mr. Jack D. Mathis

Mrs. Berval McAleer  
Mr. and Mrs. John E. McElroy  
Mr. and Mrs. A. J. McGuinness  
Ms. Marilyn McIntyre  
Mrs. Susan A. McKeever and  
Mr. John A. Quattrochi  
Mr. and Mrs. Peter E. Meehan  
CDR and Mrs. John C. Merrill (Ret.)  
Nancy Mims and Rodney Gibbs  
Jay and Susan Monahan  
Ms. Donna Morrow  
Kim and Daniel Namey  
National Christian Foundation  
Mr. and Mrs. Joseph A. Nicosia  
Mrs. Jean G. Noll  
Norton T and T Service, Inc.  
NOTR Sector of Florida Hospital, Inc.  
Mr. and Mrs. Chris Nugent and the Nugent  
Family Charitable Fund  
Dr. Robert C. Nuss and Dr. Ann Harwood-Nuss  
Mr. and Mrs. Brendan J. O'Connell  
Orthopaedic Associates of St. Augustine  
Mr. George L. Paidas  
Mrs. Katharine K. Patterson  
Ben and Seanna Phelps  
Pilot Club of Jacksonville, Inc.  
Mrs. Catherine T. Pittman  
Ms. Odette B. Pitts  
Mr. Richard G. Pohlrig  
Mr. and Mrs. Darrell R. Poli  
Poly Mem  
Ms. Susan Ponder-Stansel  
Mr. David E. Poole  
Mr. and Mrs. Robert A. Porterfield  
Louis Portnoy Family Foundation, Inc.  
Mrs. Jane Preston  
Clint and Lori Pyle  
Robert B. Ragland Foundation, Inc.  
Raven Transport Holding, Inc.  
Ms. Jolita Y. Ray  
Rayonier, Inc.  
Mr. and Mrs. William Regan  
Ms. Pauline Rice  
Ken and Rachel Ringhaver  
Mr. and Mrs. Kevin M. Robbins  
Mrs. Cornelia R. Robbins  
Dr. Samuel W. Root  
Dr. Kathleen A. Rowlett  
Mr. and Mrs. Michael E. Ruble  
Mitzi Saul  
Sawgrass Asset Management, LLC  
Mr. and Mrs. Mark B. Saye  
Mrs. Barbara S. Schaefer  
Susan and Fred Schantz  
The Michael & Janet Scharf Charitable  
Foundation, Inc.  
Mrs. Colleen Schroter  
Mr. E. H. Scott, Jr.  
Kenny and Sheryl Sekine  
Mrs. Susan Setina  
Mr. Herbert L. Seubert  
Seyfarth Shaw LLP  
Mrs. Vicki E. Shafer  
Mr. and Mrs. David J. Sherwood  
Mrs. Suzanne M. Silver  
Silverfield Development Co.

Mr. and Mrs. Thomas J. Silverio  
 Mr. and Mrs. Ari Silverman  
 Mr. and Mrs. Stephen J. Silverman  
 Mr. and Mrs. Scott Silvers  
 Mr. and Mrs. William Smith  
 Smoothie King  
 Mr. Jameel Spencer  
 Mr. and Mrs. James T. Springfield  
 St. Augustine Officers' Club  
 Mr. Ronald F. Stanford  
 Sterling Search & Consulting  
 Mr. John T. Stirrup  
 The Strobell Family  
 Ms. Kathy Tanner  
 Mr. and Mrs. Joseph A. Thompson  
 Ms. Janet R. Thornton  
 Mr. Eugene T. Tonn  
 Ms. Linda M. Turner  
 Mr. and Mrs. Gerald Tyburski  
 UF Health  
 Mary Jane and Jack Uible  
 Mrs. Darleen Unger  
 Upchurch, Bailey & Upchurch, P.A.  
 Vac-Con, Inc.  
 Ms. Pandora A. VanBerkel  
 Mr. Billy J. Walker  
 Mrs. Jennifer D. Walker  
 The Walmart Foundation  
 Mrs. Daphne J. Walton  
 Mrs. Barbara W. Webster  
 Mrs. Margie S. Weinstein  
 Mr. and Mrs. Jeffrey M. Weiss  
 Wells Fargo  
 Mr. William H. White  
 Whitey's Fish Camp, Inc.  
 John and Peggy Wilchek  
 Mr. and Mrs. Jeffrey Willis  
 George and Virginia Winterling  
 Mrs. Loti C. Woods

We would like to acknowledge and deeply thank the families that have made it possible for Community Hospice & Palliative Care to expand to eight inpatient centers and continue our work in the communities we serve. It is because of you that our patients and their families continue to receive the quality care and comfort that so many rely upon.

**Community Hospice & Palliative Care Centers for Caring**

Earl B. Hadlow Center for Caring  
 George and Margaret Morris Center for Caring  
 Dr. Gaston J. Acosta-Rua Center for Caring  
 Anne and Donald McGraw Center for Caring  
 Bailey Family Center for Caring  
 Community Center for Caring at St. Vincent's Medical Center Riverside  
 Jane and Bill Warner Center for Caring  
 Community Center for Caring at St. Vincent's Medical Center Southside

**Endowment Funds**

Blanchart Family Endowment Fund  
 Nancy M. McDonald Endowment Fund  
 Neviasser Family Community PedsCare Endowment  
 Amanda Petway Endowment Fund  
 Estates of Capt. and Mrs. Powell P. Vail, Jr.  
 Estate of Grafton N. Smith  
 Weaver Family Endowment Fund  
 The Edward W. and Marlene K. White Endowment  
 Estate of Betty Williams

We would like to thank those who have included Community Hospice & Palliative Care in their will or other financial planning.

**The 1979 Society**

Ms. Laaree Abramowitz\*  
 Mr. and Mrs. Fernando J. Acosta-Rua  
 Mr. and Mrs. Mark F. Bailey, Sr.  
 Ms. Marcia R. Baygents  
 Mr. Albert J. Carnegie\*  
 Ms. Mary M. Cleavland\*  
 Mr. Ronald Cohen  
 Mr. and Mrs. Robert J. Curry  
 Ms. Amy R. Davis  
 Mrs. Marian M. Derfer  
 Dr. George H. and Dottie Dorion  
 Ms. Elizabeth A. Dougherty\*  
 Mr. and Mrs. Jeff Edgar  
 Ms. Carole S. Fishbaugh\*  
 Mr. Henry R. Gibson\*  
 Ms. Barbara Goldberg  
 Ms. Bonita Golden-Sikes  
 Mr. and Mrs. John T. R. Hayt, Sr.  
 Mrs. Mary R. Henry  
 Ms. Ruth Holmes  
 Ms. Virginia M. Johnsen\*  
 Ms. Louise Shumpert Keen  
 Sgt. Jeffrey R. Kersey II  
 Mr. Scott Manley and Ms. Mary A. Smith  
 Mr. and Mrs. Kenneth E. Martin  
 Ms. Frances W. McCurry  
 Mr. and Mrs. William G. McDonnell  
 Ms. Kathryn McIlvaine  
 Ms. Myrtle H. Mikkelsen\*  
 Mr. William J. O'Connor\*  
 Ms. Ursula B. O'Connor\*  
 Mr. Joel and Ms. Marie Pangborn  
 Capt. William A. Pickens, U.S.N. (Ret.)  
 Mr. Elias Rosenblatt\*  
 Ms. Isabelle C. Russell\*  
 Mrs. Lily Scott  
 Mr. Joseph E. Sexton  
 Mr. Robert D. Slimmon\*  
 Ms. Marguerite Smalley\*  
 Mr. Harold H. Snyders  
 Mr. and Mrs. David Spring  
 Ms. Betty J. Armstrong Taylor\*  
 Mr. George Dekle Taylor\*  
 Mr. James W. Taylor\*  
 Ms. Virginia H. Taylor\*  
 Mr. Edward A. Thornwell, Jr.\*  
 Ms. Gwynne G. Tonsfeldt\*  
 Mr. Robert L. Tonsfeldt  
 Mrs. Daphne J. Walton  
 Ms. Deborah P. Whittle  
 Ms. Nadine M. Wynne\*

\* Deceased



Medallion recipients at the annual Light Party recognizing Guardians of Light members.



## Community Hospice & Palliative Care Leadership

As the only locally-based, locally governed nonprofit palliative and hospice care provider, our leaders are part of the communities we serve. Their care and compassion further strengthen Community Hospice & Palliative Care to ensure our sustainability and stewardship to our communities.

**Susan Ponder-Stansel**  
*President & CEO*

**Phillip Ward**  
*Executive Vice President & Chief Operating Officer*

**Carlos Bosque**  
*Executive Vice President & Chief Financial Officer*

**John Erstling**  
*Senior Vice President of Community Engagement & Philanthropy*

**Andrea Fritz**  
*Deputy Chief Financial Officer*

**John Lyerly**  
*Senior Vice President of Strategy*

**Mary McElroy**  
*Senior Vice President of Hospice Services*

**John McIlvaine**  
*Senior Vice President of Emerging Markets*

**Jim Monahan**  
*Vice President of Marketing & Communications*

**Kenny Stevenson**  
*Vice President of Compliance & Quality, Chief Compliance Officer*

## Community Hospice & Palliative Care Board of Directors

Fernando J. Acosta-Rua, Chair

Tracy Arthur  
Katherine Batenhorst  
Scott S. Cairns  
Gerardo Colon-Otero, MD  
Nancy M. Dawson, MD  
Col. Bill Dudley (Ret.)  
Christopher F. Emans  
Carole Gardner  
Sen. Audrey Gibson  
Marie Gnage, PhD  
Joseph S. Gordy  
Ann Harwood-Nuss, MD  
Richard Hawthorne  
Rev. Marsha Holmes  
Hon. Marcia Morales Howard  
Patrice Jones, DNP, RN, NE-BC  
T. Fitch King III  
Joy G. Korman  
Sue Leger-Krall, ARNP, PhD  
John D. Logue  
John W. Logue  
M. Raymond Matuza  
Ambassador Marilyn McAfee  
Donald C. "Josh" McGraw III  
David Meyer  
Greg Miller  
Joseph M. Mitrack  
Hon. Kristina Mobley  
Marcia C. Morales  
Robert C. Nuss, MD

Marsha Oliver, MBA  
Kevin Robbins  
Kyle Sanders, FACHE  
Allison (Ali) Korman Shelton  
Lawrence A. Solberg, Jr., PhD, MD  
Keith Stein, MD  
Larry Wagoner, PhD, LMFT  
Larry Wilf, MD  
Morrie O. Zimmerman

Ray Driver, Ex-Officio  
Susan Ponder-Stansel, Ex-Officio

Yank D. Coble Jr., MD, Honorary

Gene H. Lewis, Emeritus  
James O'Reilly, Emeritus  
Elizabeth R. Petway, Emeritus  
Thomas F. Petway, Emeritus  
Sen. Jim King Jr., Emeritus  
(In memoriam)

## Community Hospice & Palliative Care Foundation Board of Directors

Ray Driver, Chair

Fernando J. Acosta-Rua  
Michael Assaf  
Mark F. Bailey  
Geraldine Farrugia  
Virginia Hall  
Fontaine LeMaistre IV  
John W. Logue  
Josh McGraw  
Jill M. McGriff  
Susan R. Monahan, OD, FAAO

Marcia C. Morales  
Jason Osborne  
Ingrid P. Perdikis  
Stephanie Ramirez  
Kevin M. Robbins  
Michael E. Ruble  
Rebecca Schwam  
Unni Thomas, MD  
Craig C. Walker  
Lisha S. Wise

Susan Ponder-Stansel, Ex-Officio



## St. Augustine/St. Johns County Advisory Council

Katherine Batenhorst, Chair

Christine Chapman, 1<sup>st</sup> Vice Chair

Theresa Coomes, ARNP, 2<sup>nd</sup> Vice Chair

Roberta Kaye, Community Outreach Committee

David Upchurch, Community Fundraising Committee

Kelly Barrera, Nominating Committee Chair

Virginia Andrews, RN  
Alecia Bailey  
Mark Bailey, Jr.  
Jane Boles  
Daphne Cameron  
Barbara Cone  
Betty Crosby  
Ronald Dixon, DMD, FAGD, PA  
Julie Vaill Gatlin  
Karen Glenos  
Skip Goodson  
Ingrid Guier  
Ray Hamel

Thomas Jackson  
Deltra Long  
Almarene Lowndes  
R. Joan Maguire  
Linda Matuza  
Bill Mignon  
Jane M. Sims, Honorary  
Sandy Upchurch  
Pam Versaggi  
Dr. Walter West  
  
Susan Ponder-Stansel, Ex-Officio



We are immensely grateful to our community partners who enable us to fulfill our mission: *To improve the quality of life for patients and families, and to be the compassionate guide for end-of-life care in our community.*

Along with our donors, volunteers and community partners, we are able to support patients and families experiencing advanced illness every step of the way.

We appreciate your support and look forward to continuing our work together in 2017 and beyond.



Community Focused • Community Supported  
904.268.5200 • [CommunityHospice.com](http://CommunityHospice.com)

Stay Connected: [!\[\]\(a03a7eb2f4046e1d3c76772003e549ea\_img.jpg\)](#) [!\[\]\(844169987a590ed8c7e31d5d18950e8d\_img.jpg\)](#) [!\[\]\(2af34e678d9364b2f32b7174f4964d2c\_img.jpg\)](#) [!\[\]\(70453908cab6780413d48bd2b8b15c53\_img.jpg\)](#)